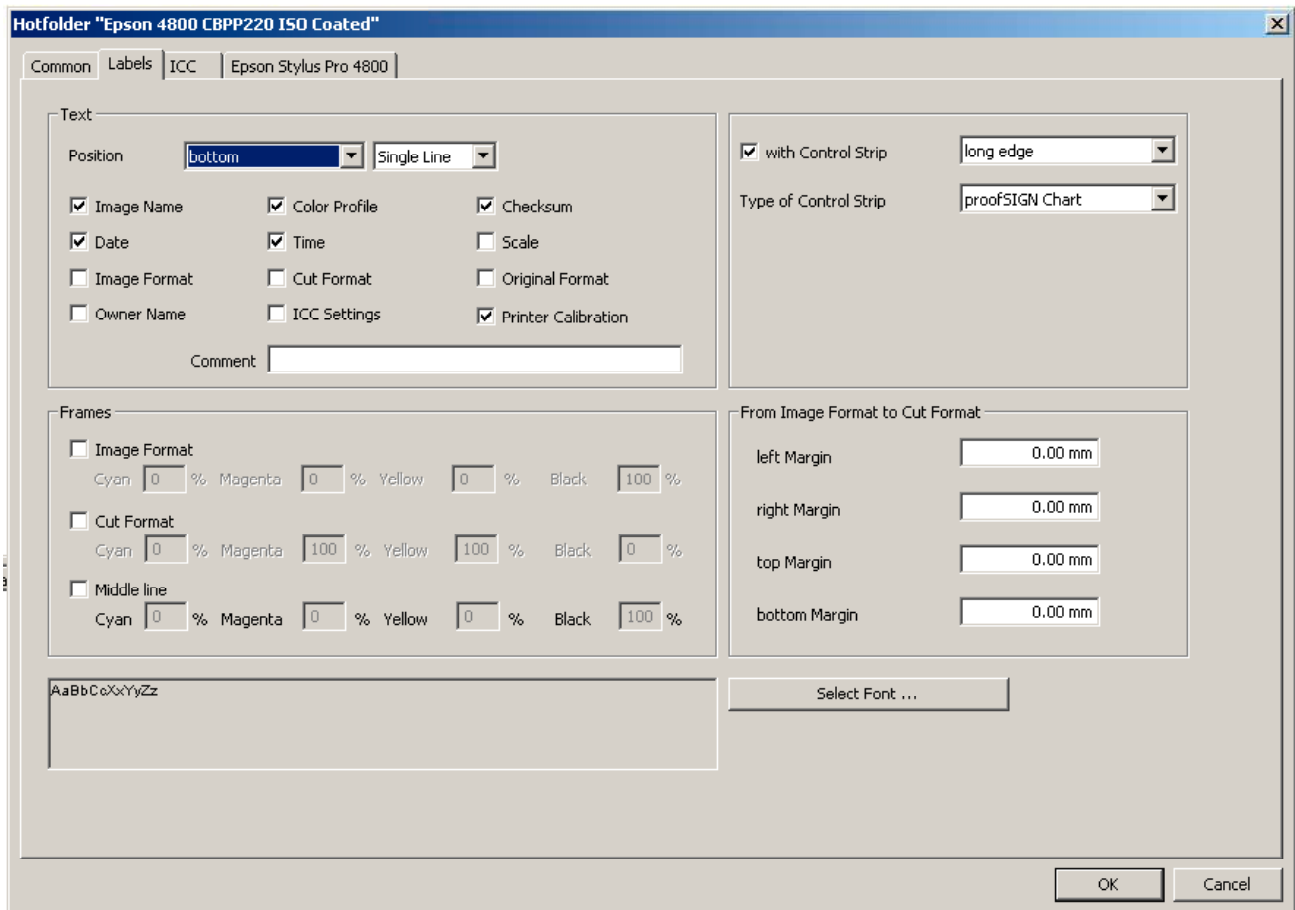


# Installing proofSIGN chart in GMG Colorproof 04

1. Quit GMG Colorproof
2. Copy the 2 chart images 'proofSIGN Chart K0.tif' and 'proofSIGN Chart K90.tif' from the proofSIGN CD into C:\Colorproof\Strips.

If you have installed GMG Colorproof into a different location, then adjust the destination accordingly.

3. Launch GMG Colorproof 04
4. Right click on the Hotfolder you wish to edit and click 'HotFolder Properties...'
5. Click the 'Labels' Tab and tick 'with control strip' and select 'proofSIGN Chart' from the 'Type of control strip' menu.



6. Select which edge you wish the control strip to appear
7. Click OK to confirm.